



8 Collier Close, Maidenhead, SL6 7LE
£295,000 Leasehold

CHAIN FREE A well-presented two-bedroom first-floor maisonette, benefiting from its own private entrance, garage, and a garden. The property is set within a quiet cul-de-sac, offering convenient access to Maidenhead Elizabeth Line station and a range of nearby amenities.

Entrance Hall

storage cupboard

Sitting Room

Fireplace, door leading to kitchen

Kitchen

Fitted with a range of wall and base units, providing ample storage and preparation space, with room for appliances

Double Bedroom**Bedroom****Bathroom**

Comprising a three-piece suite including bath, shower over, wash hand basin and WC

Outside

Enclosed secluded garden to the rear

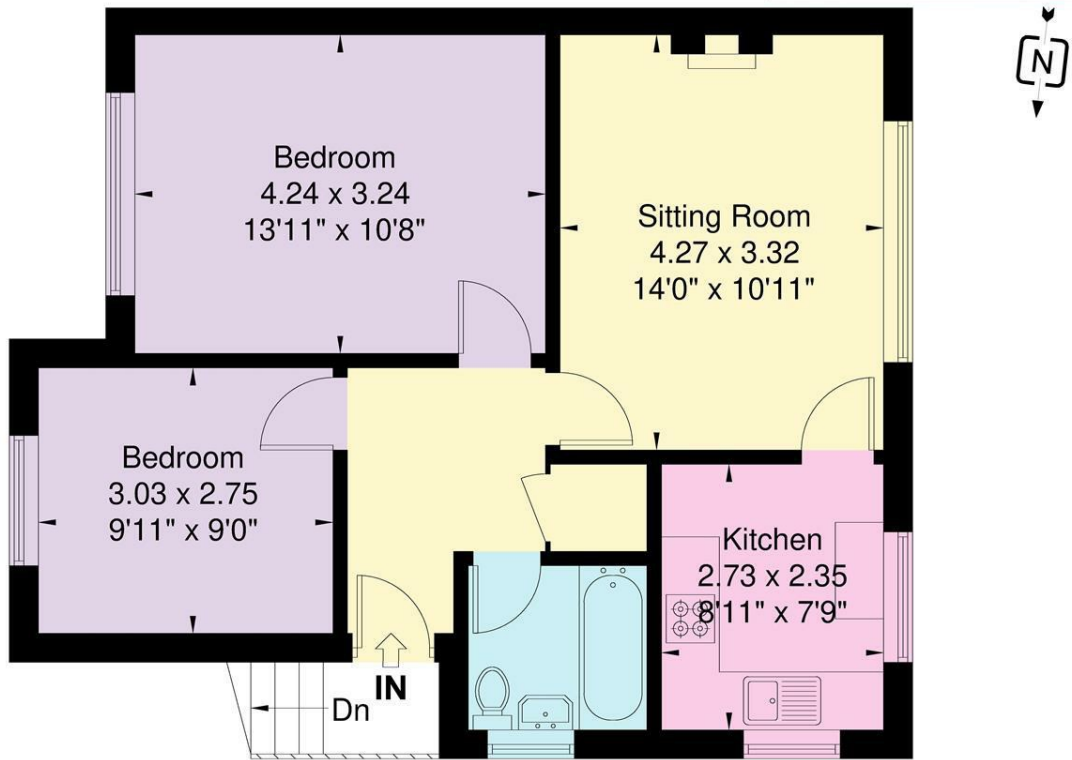
Garage

Floor Plan

Approximate Floor Area = 55.1 sq m / 593 sq ft

Collier Close

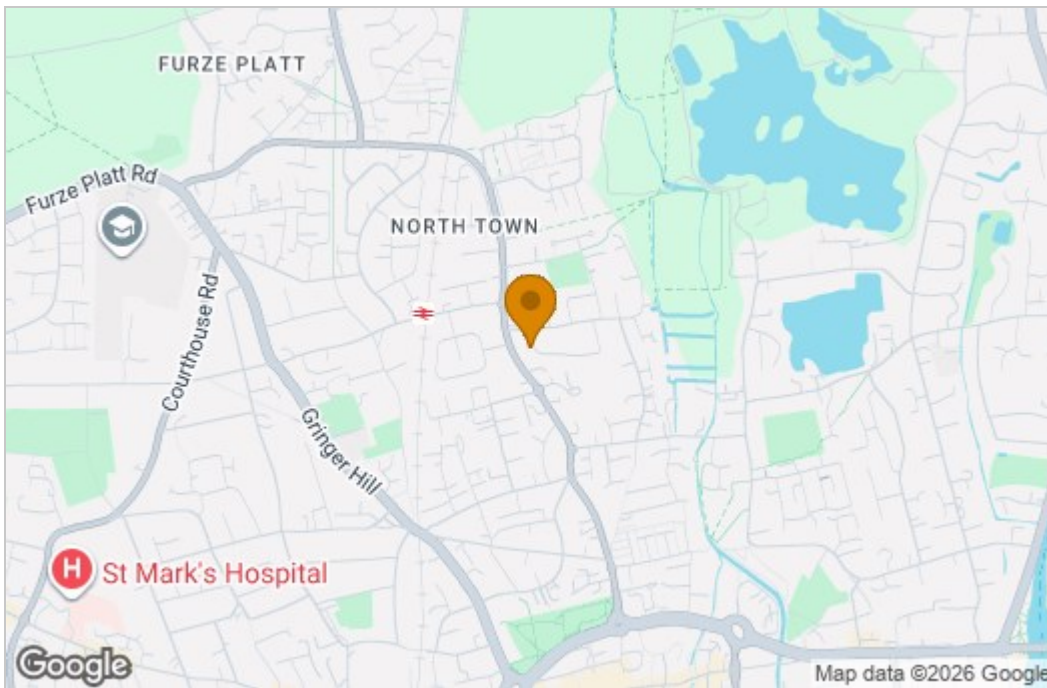
Waterman
Established 1990



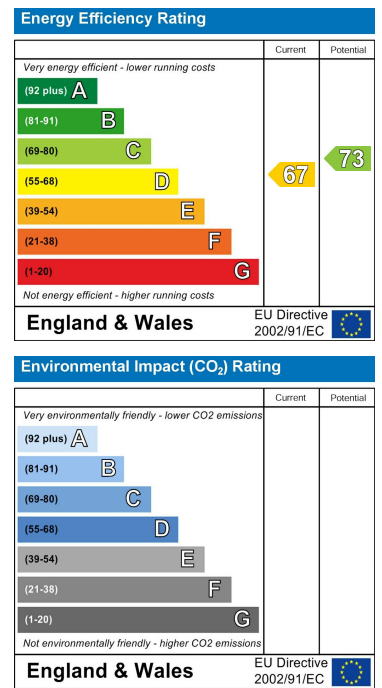
First Floor

Illustration for identification purposes only, measurements are approximate, not to scale.

Area Map



Energy Efficiency Graph



These particulars, whilst believed to be accurate are set out as a general outline only for guidance and do not constitute any part of an offer or contract. Intending purchasers should not rely on them as statements of representation of fact, but must satisfy themselves by inspection or otherwise as to their accuracy. No person in this firm's employment has the authority to make or give any representation or warranty in respect of the property.